
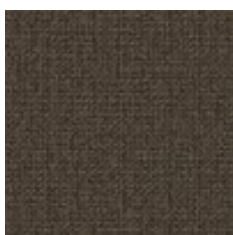


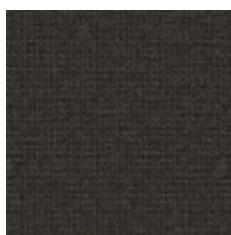
Use	Upholstery, Panel Fabrics
Content	100% Polyester (Postconsumer Recycled)
Finish	Silicone (Supreen)
Backing	Fluid Barrier (Supreen)
Cleaning	Bleach (10:1), Water-based/Solvent (WS)
Weight	21.5 ounces Yard
Width	54 inches (137 cm)
Shown Railroaded	No
Flammability	ASTM E 84 Unadhered Class A, CA TB 117-2013
Abrasion	100,000 Wyzenbeek double rubs (CD)
Lightfastness	40 hours
ACT	
Standards & Certifications	Healthier Hospitals, HPD, LBC Red List Compliant, Mindful Materials, Prop 65 Compliant, WELL
Material Chemistry	No Antimicrobials, No Flame Retardants, No PFAS
LEED	Recycled Content
Sustainable Logistics	Ships Carbon Neutral
Warranty	5 years
Origin	China



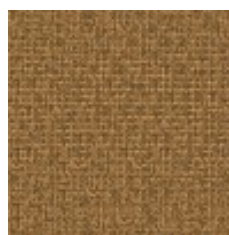
Travertine  
3169-101



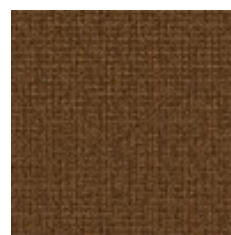
Dovetail  
3169-102



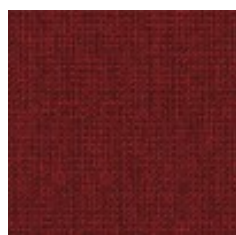
Ore  
3169-103



Farro  
3169-201



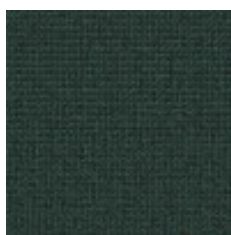
Earthen  
3169-202



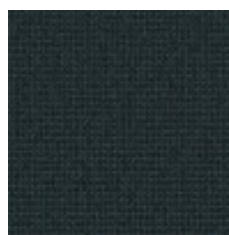
Heat  
3169-301



Patina  
3169-401



Canal  
3169-402



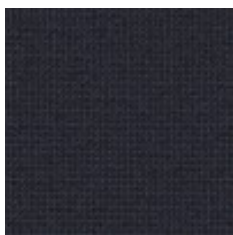
Oceanside  
3169-403



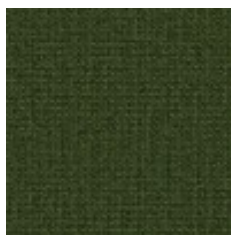
Flaxflower  
3169-404



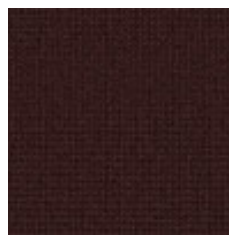
Inkwell  
3169-405



Indigo  
3169-406



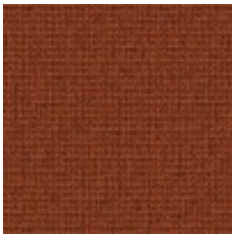
Topiary  
3169-501



Blackberry  
3169-601



Eggplant  
3169-602



Autumnal  
3169-701



Silverpoint  
3169-801



Acier  
3169-802



Slate  
3169-803



Granite  
3169-804